



UPDATE ON THE 2023 DISTRICT-WIDE FACILITIES ASSESSMENT OMAHA PUBLIC SCHOOLS



Agenda:

- Introductions
- Current Status of Major Study Components:
 - Facilities Condition Assessment
 - Educational Adequacy Assessment
 - Master Visions for High Schools
- Next Steps
- Questions and Answers

FACILITIES CONDITION ASSESSMENT



FACILITY CONDITION ASSESSMENT METHODOLOGY

1. **Gather and compile** existing building information.
2. Develop building **component life spans** in collaboration with OPS staff and **conduct field observations** to document condition of building components.
3. **Determine & document remaining life span** of each building components based upon year installed and condition observed in the field.
4. **Generate quantities** of each building components that will require replacement within planning period of 20 years.
5. Data entry of building component quantity and time frame to **generate estimated costs**.
6. **Assign unit cost to each building component** in each assigned time frame.
7. **Compile all facility costs into various sortable categories**.

FACILITY CONDITION ASSESSMENT APPROACH



Architectural Materials Life Span

Updated on 5-24-2022

Exterior Enclosure

1. Wall

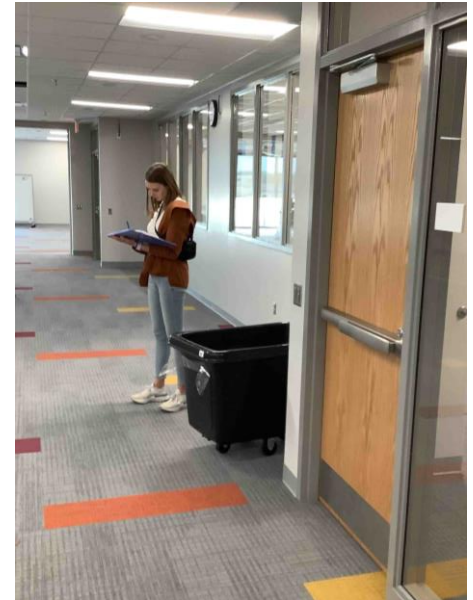
- Brick Masonry - 75 Years
- Burnished CMU - 75 Years
- Split Face CMU - 75 Years
- Precast - 75 Years
- Stone - 75 Years
- Mortar - 30-40 Years (area and sf)
- Metal Panels - (area and sf) Centria Warranty (20) Rynobond (30)
- Cement Board - (area and sf) (Hardie Board - 30-year warranty)
- EIFS - 15 Years (area and sf)
- Fascia
 - Metal - 30-40 Years (If with height noted)
 - Wood - 15-20 Years (If with height noted)
 - Other - 25-35 Years (If with height noted)

2. Exterior Openings

- Windows
 - Aluminum windows - 30 Years (h x w and quantity - elevations or schedule if available)
 - Aluminum storefront - 30 Years (h x w and quantity - elevations or schedule if available)
 - Clad wood windows - 15 (h x w and quantity - elevations or schedule if available)
 - Hollow metal - 15 Years (replace exterior with Aluminum except at service areas)
 - (h x w and quantity - elevations or schedule if available)
- Doors
 - Hollow metal - 25 Years (quantity and configuration - elevations and/or schedule)
 - Aluminum - 25 Years (quantity and configuration - elevations and/or schedule)
 - Sectional Doors - 20 years
- Sealants - 10 Years
 - Expansion and Control Joints (If) - Model in Revit for schedule
 - Window and door perimeters (If) - Model in Revit for schedule

3. Roofs (taken from OPS Roof Plans)

- EPDM - 20-25 Years
- TPO - 20-25 Years
- Built Up - 20-25 Years
- Standing Seam - 20-25 Years
- Asphalt Shingles - 20-25 Years
- Flashing - 20-25 Years
- Silicone Coating - Adds 5-10 years to the roof below the coating



Facilities Condition Assessment

Pawnee Elementary School

Building Name	Priority	Priority Total	Building Total	Priority Inflation Rate	Building Total w/ Priority Inflation Rate	Building Total w/ Priority Inflation Rate
Pawnee Elementary Building 127 - 101						
	None - 20 + yrs	\$ 134,490.82		97.13%	\$ 265,121.75	
	Minor - 14 - 19 yrs	\$ 480,202.80		74.44%	\$ 837,665.76	
	Serious - 9 - 13 yrs	\$ 1,087,350.86		44.92%	\$ 1,575,788.87	
	Critical - 4 - 8 yrs	\$ 5,038,658.61		32.56%	\$ 6,679,245.85	
	Immediate - 0 - 3 yrs	\$ 1,349,846.17		19.00%	\$ 1,606,316.94	
Pawnee Elementary Building 127 - 101			\$ 8,090,549.26			\$ 10,964,139.18
Pawnee Elementary Grounds 127 - 301						
	None - 20 + yrs	\$ -		97.13%	\$ -	
	Minor - 14 - 19 yrs	\$ 915,410.87		74.44%	\$ 1,596,842.72	
	Serious - 9 - 13 yrs	\$ 28,689.34		44.92%	\$ 41,576.59	
	Critical - 4 - 8 yrs	\$ -		32.56%	\$ -	
	Immediate - 0 - 3 yrs	\$ 100,241.03		19.00%	\$ 119,286.83	
Pawnee Elementary Grounds 127 - 301			\$ 1,044,341.24			\$ 1,757,706.14
Pawnee Relocatable Classrooms						
Pawnee Relocatable Classrooms			\$ 4,808,443.42			\$ 5,977,731.86
Pawnee, Grounds and Relocatable Classrooms						
Grand Total (over 20 years)			\$ 13,943,333.92			\$ 18,699,577.18

Building Area - includes 11 each portables

59,141 sqft

59,141 sqft

\$ 235.76 /sqft

\$ 316.19 /sqft

Facilities Condition Assessment

Hale Middle School

Building Name	Priority	Priority Total	Building Total	Priority Inflation Rate	Building Total w/ Priority Inflation Rate	Building Total w/ Priority Inflation Rate
Hale Middle Building 881-101						
	None - 20 + yrs	\$ 2,786,828.15		97.13%	\$ 5,493,674.33	
	Minor - 14 - 19 yrs	\$ 2,381,028.56		74.44%	\$ 4,153,466.22	
	Serious - 9 - 13 yrs	\$ 4,127,952.66		44.92%	\$ 5,982,228.99	
	Critical - 4 - 8 yrs	\$ 2,454,457.87		32.56%	\$ 3,253,629.35	
	Immediate - 0 - 3 yrs	\$ 3,399,854.05		19.00%	\$ 4,045,826.32	
Total Hale Middle Building 881-101			\$ 15,150,121.29			\$ 22,928,825.22
Hale Middle Elementary Grounds 881-301						
	None - 20 + yrs	\$ -		97.13%	\$ -	
	Minor - 14 - 19 yrs	\$ 1,029,249.76		74.44%	\$ 1,795,423.28	
	Serious - 9 - 13 yrs	\$ 55,313.30		44.92%	\$ 80,160.03	
	Critical - 4 - 8 yrs	\$ 47,184.51		32.56%	\$ 62,547.79	
	Immediate - 0 - 3 yrs	\$ 438,698.24		19.00%	\$ 522,050.91	
Total Hale Middle Grounds 881-301			\$ 1,570,445.81			\$ 2,460,182.01
Hale Middle Building and Grounds						
Grand Total (over 20 years)			\$ 16,720,567.10			\$ 25,389,007.23

Building Area

170,471 sqft

170,471 sqft

\$

98.08 /sqft

\$

148.93 /sqft

Facilities Condition Assessment

District-Wide Summary Data Over the Next 20 Years
(Approx. 98% complete and Projected at Completion)

	Priority #1 Complete						Current			
		None 20+ yrs	Minor 14 - 19 yrs	Serious 9 - 13 yrs	Critical 4 - 8 yrs	Immediate 0 - 3 yrs	Total Cost	SF	Average Cost	Cost/SF
Pre K	5	\$ 4,337,305	\$ 12,472,671	\$ 9,337,828	\$ 5,807,030	\$ 7,935,913	\$ 39,890,747	173,586	\$ 7,978,149	\$ 229.80
Elementary School	63	\$ 61,538,154	\$ 192,296,666	\$ 197,652,356	\$ 146,059,139	\$ 343,132,293	\$ 940,678,607	4,963,744	\$ 14,931,406	\$ 189.51
Middle School	12	\$ 88,085,342	\$ 57,082,958	\$ 87,157,669	\$ 88,223,233	\$ 139,307,955	\$ 459,857,158	2,357,731	\$ 38,321,430	\$ 195.04
High School	9	\$ 149,433,848	\$ 73,663,424	\$ 123,258,294	\$ 116,814,010	\$ 158,071,637	\$ 621,241,213	3,199,470	\$ 69,026,801	\$ 194.17
Alternative	6	\$ 15,395,721	\$ 16,003,251	\$ 9,426,748	\$ 11,922,228	\$ 26,145,453	\$ 78,893,401	271,905	\$ 13,148,900	\$ 290.15
Support Facility	11	\$ 4,420,862	\$ 17,988,349	\$ 20,389,558	\$ 47,401,139	\$ 31,974,952	\$ 122,174,858	828,169	\$ 11,106,805.32	\$ 147.52
Total	106	\$ 323,211,232	\$ 369,507,319	\$ 447,222,453	\$ 416,226,778	\$ 706,568,202	\$ 2,262,735,984	11,794,605		
Percent Complete	98%									

		Projected			
		Total Cost	SF	Average Cost	Cost/SF
Pre K		\$ 39,890,747	173,586	\$ 7,978,149	\$ 229.80
Elementary School		\$ 970,541,420	5,121,395	\$ 14,931,406	\$ 189.51
Middle School		\$ 459,857,158	2,357,731	\$ 38,321,430	\$ 195.04
High School		\$ 621,241,213	3,199,470	\$ 69,026,801	\$ 194.17
Alternative		\$ 78,893,401	271,905	\$ 13,148,900	\$ 290.15
Support Facility		\$ 122,174,858	828,169	\$ 11,106,805	\$ 147.52
Total		\$ 2,292,598,797	11,952,256		

Facilities Condition Assessment

Median Costs by Major Category

Elementary Total Cost

Site	17%
Building Interior	35%
Building Envelope	9%
Mech/Plumb/Fire Protection	18%
Electrical	20%

Total 100%



Middle School Total Cost

Site	45%
Building Interior	18%
Building Envelope	5%
Mech/Plumb/Fire Protection	25%
Electrical	7%

Total 100%



High School Total Cost

Site	25%
Building Interior	27%
Building Envelope	10%
Mech/Plumb/Fire Protection	26%
Electrical	12%

Total 100%



District Wide Total Cost

Site	29%
Building Interior	27%
Building Envelope	8%
Mech/Plumb/Fire Protection	23%
Electrical	13%

Total (over 20 years) 100%



Site	12220	Paving
	12240	Landscaping
	12320	Drainage & Sewage Systems
	12330	Storm Sewer

Building Interior	06100	Interior Partitions
	06160	Interior Doors & Frames
	06210	Wall Finishes (Interior)
	06220	Flooring
	06230	Ceiling Finishes
	06240	Millwork
	06300	Specialties
	07010	Elevators & Lifts

Building Envelope	01000	Building Foundations
	02000	Substructure
	03100	Floor Construction
	03200	Roof Construction
	04100	Walls (Exterior)
	04110	Stairs & Railings
	04150	Soffits / Fascia Systems
	04210	Windows
	04230	Exterior Doors
	05000	Roof Coverings

Mech/Plumb/ Fire Protection		08110	Domestic Water
		08113	Domestic Water Supply Equipment
		08120	Sanitary Sewer
		08140	Plumbing Fixtures / Faucets / Trim
		08220	Heat Generating System
		08230	Cooling Generating System
		08241	Air Distribution System
		08242	Exhaust Ventilation System
		08260	Controls
	08300	Fire Protection	

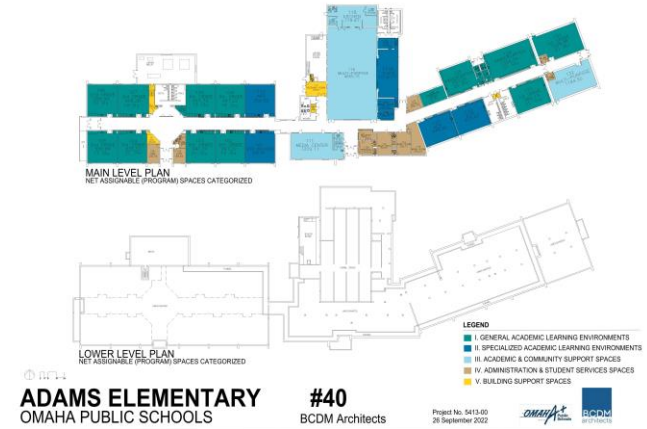
Electrical	09100	Service & Distribution
	09210	Power Distribution
	09220	Lighting
	09310	Auxiliary Systems
	09333	Fire & Life Safety Equipment



EDUCATIONAL ADEQUACY ASSESSMENT

EDUCATIONAL ADEQUACY ASSESSMENT APPROACH

1. **Gathered staff list and room usage plans information** from the School Principals.
2. **Assembled ACAD files** from OPS.
3. Generated colored plans to represent:
 - a. **Plan 1:** Overall Floor Plans of School
 - b. **Plan 2:** Gross Building Area plan
 - c. **Plan 3:** Net Assignable (Program) Spaces plan
 - d. **Plan 4:** Spaces that Determine Capacity plan
 - e. **Plan 5:** Net Assignable (Program) Spaces Categorized plan
4. Created a multi-infrastructured **system that ties together CAD, Revit, and Excel** for information processing.
5. Developed a **software that automates and compares each school** against the Optimal Facility Guidelines.
6. Took the Revit information and ran a script that **transferred the information into the excel software** (room names, numbers, areas, student counts).
7. **Populated the excel file** with the type of **learning environment, room usage, portables, etc.**
8. Ran the excel software. **This created an output document used to assess the utilization and capacity** of the schools.



ELEMENTARY EDUCATIONAL ADEQUACY ASSESSMENT

*Data based on Fall 2021 and Spring 2022

ELEMENTARY SCHOOL SUMMARY

NAME OF SCHOOL	NUMBER OF SECTIONS	NUMBER OF PRE-KINDERGARTEN	ORIGINAL OPS OFG	OVERALL SQ FOOTAGE	DEVIATION FROM OPS OFG	% DEVIATION FROM OPS OFG	CAPACITY					PORTABLE % OF UTILIZATION	% OF REPLACE CONSTRUCTION	ENERGY STAR
							OPS OFG	EXISTING	FIRE CODE	PROGRAM	UTILIZATION			
GILDER ELEMENTARY SCHOOL	3	1	79,328	51,047	(28,281)	-35.65%	517	312	869	441	71%	NA	54%	83
CASTELAR ELEMENTARY SCHOOL	5	1	94,552	69,247	(25,305)	-26.76%	767	616	1288	658	94%	NA	62%	67
LAURA DODGE ELEMENTARY SCHOOL	3	1	76,642	52,014	(24,628)	-32.13%	467	382	872	451	85%	NA	58%	39
CATLIN ELEMENTARY SCHOOL	2	0	65,896	42,811	(23,085)	-35.03%	300	127	382	201	63%	NA	50%	84
CRESTRIDGE ELEMENTARY SCHOOL	3	0	74,851	52,618	(22,233)	-29.70%	450	377	1017	538	70%	NA	59%	70
GOMEZ HERITAGE ELEMENTARY SCHOOL	6	2	105,299	86,618	(18,681)	-17.74%	934	670	1506	755	99%	10%	55%	61
EDISON ELEMENTARY SCHOOL	3	1	76,642	58,091	(18,551)	-24.20%	467	359	1016	512	70%	NA	62%	75
BEALS ELEMENTARY SCHOOL	2	1	70,373	52,109	(18,264)	-25.95%	367	272	646	331	82%	NA	50%	80
ADAMS ELEMENTARY SCHOOL	2	0	65,896	48,810	(17,086)	-25.93%	300	240	682	359	67%	NA	42%	59
CONESTOGA ELEMENTARY SCHOOL	2	4	75,746	60,037	(15,709)	-20.74%	418	311	1102	566	55%	NA	64%	87
STANDING BEAR ELEMENTARY SCHOOL	5	3	98,134	83,041	(15,093)	-15.38%	801	562	1209	603	93%	NA	49%	75
BENSON WEST ELEMENTARY SCHOOL	4	2	87,388	73,231	(14,157)	-16.20%	634	405	1203	624	65%	NA	47%	55
HARTMAN ELEMENTARY SCHOOL	3	1	76,642	62,998	(13,644)	-17.80%	467	432	935	479	90%	NA	44%	69
JEFFERSON ELEMENTARY SCHOOL	3	0	78,881	65,949	(12,932)	-16.39%	525	432	1014	536	81%	NA	68%	72
HARRISON ELEMENTARY SCHOOL	2	0	68,582	54,669	(13,913)	-20.29%	350	256	692	368	70%	NA	51%	66
FULLERTON ELEMENTARY SCHOOL	4	2	87,388	76,261	(11,127)	-12.73%	634	459	1004	500	92%	NA	49%	51
CENTRAL PARK ELEMENTARY SCHOOL	4	2	87,388	76,828	(10,560)	-12.08%	634	344	804	400	86%	NA	50%	66
FONTENELLE ELEMENTARY SCHOOL	4	2	87,388	81,212	(6,176)	-7.07%	634	434	1371	703	62%	NA	46%	84
GIFFORD PARK ELEMENTARY SCHOOL	2	3	73,955	69,902	(4,053)	-5.48%	401	331	840	407	81%	NA	43%	71
BANCROFT ELEMENTARY SCHOOL	5	1	101,269	97,312	(3,957)	-3.91%	892	615	1371	723	95%	10%	62%	10
DUNDEE ELEMENTARY SCHOOL	3	0	78,881	76,033	(2,848)	-3.61%	525	426	907	478	89%	NA	42%	36
FIELD CLUB ELEMENTARY SCHOOL	5	2	96,343	96,906	563	0.58%	784	587	1259	638	92%	NA	47%	55
BELLE RYAN ELEMENTARY SCHOOL	2	2	72,164	73,993	1,829	2.53%	384	273	771	383	71%	NA	50%	92
GATEWAY ELEMENTARY SCHOOL	5	2	103,060	111,236	8,176	7.93%	909	848	1723	881	96%	NA	42%	73
BELVEDERE ELEMENTARY SCHOOL	3	2	78,433	98,275	19,842	25.30%	484	395	926	468	84%	NA	51%	65
ASHLAND PARK ROBBINS ELEMENTARY SCHOOL	5	2	101,716	146,703	44,987	44.23%	884	696	2039	1,067	65%	NA	52%	33

ELEMENTARY EDUCATIONAL ADEQUACY ASSESSMENT

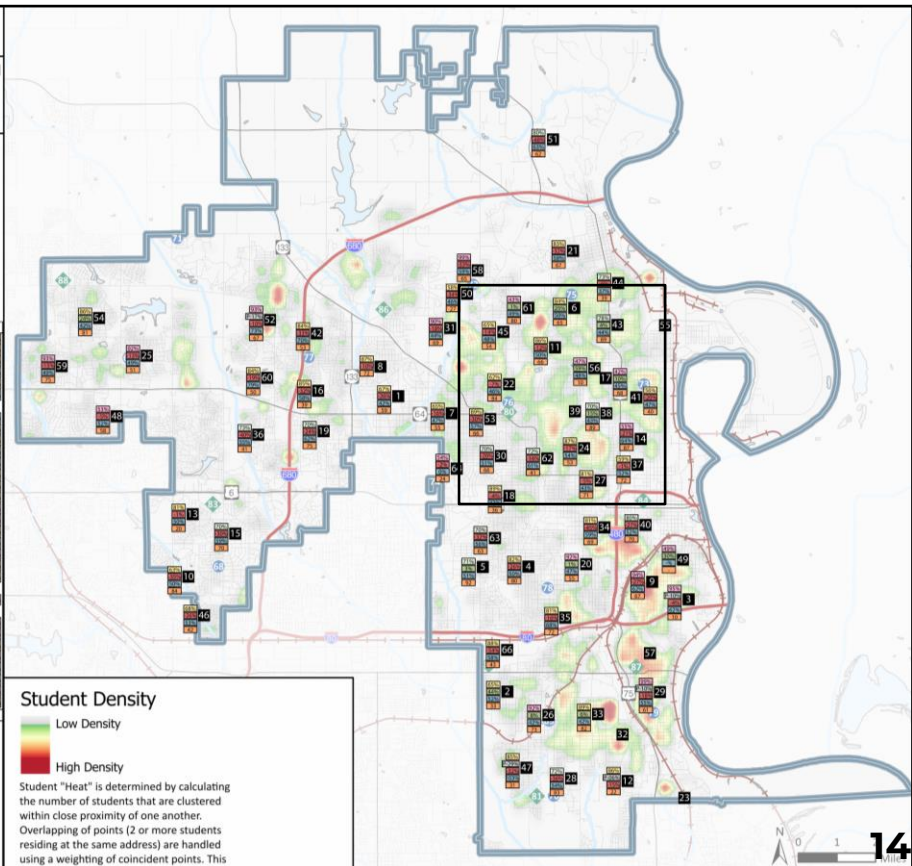
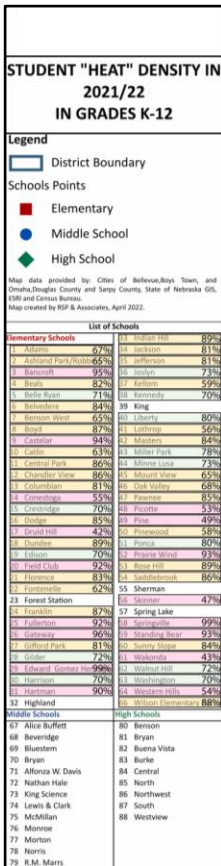
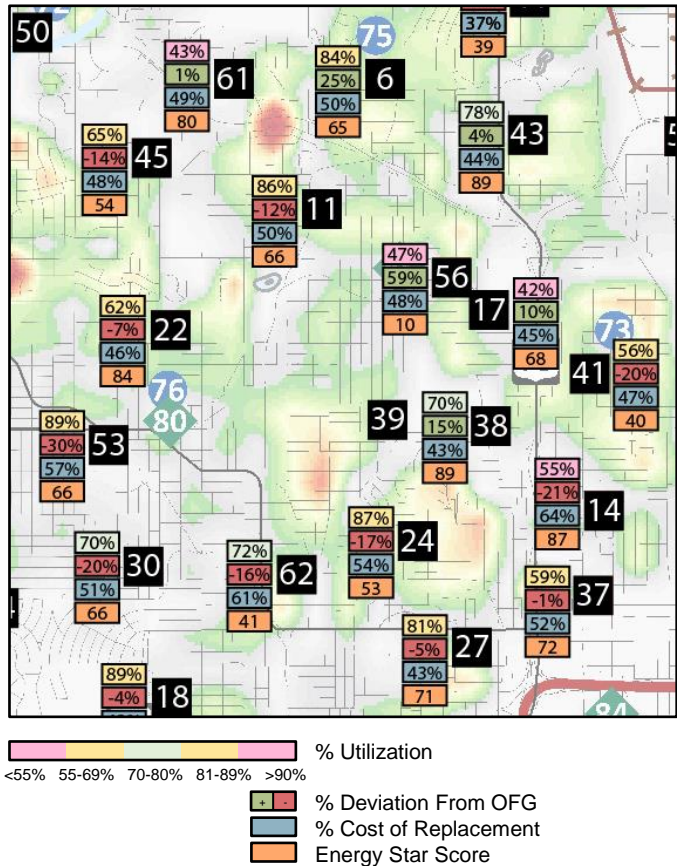
*Data based on Fall 2021 and Spring 2022

ELEMENTARY SCHOOL SUMMARY

NAME OF SCHOOL	ORIGINAL OPS OFG	OVERALL SQ FOOTAGE	DEVIATION FROM OPS OFG	% DEVIATION FROM OPS OFG	CAPACITY UTILIZATION	PORTABLE % OF UTILIZATION	% OF REPLACE CONSTRUCTION
ADAMS ELEMENTARY SCHOOL	65,896	48,810	(17,086)	-25.93%	67%	NA	42%
ASHLAND PARK ROBBINS ELEMENTARY SCHOOL	101,716	146,703	44,987	44.23%	65%	NA	52%
BANCROFT ELEMENTARY SCHOOL	101,269	97,312	(3,957)	-3.91%	95%	10%	62%
BEALS ELEMENTARY SCHOOL	70,373	52,109	(18,264)	-25.95%	82%	NA	50%
BELLE RYAN ELEMENTARY SCHOOL	72,164	73,993	1,829	2.53%	71%	NA	50%
BELVEDERE ELEMENTARY SCHOOL	78,433	98,275	19,842	25.30%	84%	NA	51%
BENSON WEST ELEMENTARY SCHOOL	87,388	73,231	(14,157)	-16.20%	65%	NA	47%
CASTELAR ELEMENTARY SCHOOL	94,552	69,247	(25,305)	-26.76%	94%	NA	62%
CATLIN ELEMENTARY SCHOOL	65,896	42,811	(23,085)	-35.03%	63%	NA	50%
CENTRAL PARK ELEMENTARY SCHOOL	87,388	76,828	(10,560)	-12.08%	86%	NA	50%
COLUMBIAN VIEW ELEMENTARY SCHOOL	69,478	69,082	(396)	-0.57%	81%	NA	50%
CONESTOGA ELEMENTARY SCHOOL	75,746	60,037	(15,709)	-20.74%	55%	NA	64%
CRESTRIDGE ELEMENTARY SCHOOL	74,851	52,618	(22,233)	-29.70%	70%	NA	59%
DUNDEE ELEMENTARY SCHOOL	78,881	76,033	(2,848)	-3.61%	89%	NA	42%
EDISON ELEMENTARY SCHOOL	76,642	58,091	(18,551)	-24.20%	70%	NA	62%
FIELD CLUB ELEMENTARY SCHOOL	96,343	96,906	563	0.58%	92%	NA	47%
FLORENCE ELEMENTARY SCHOOL	65,896	44,995	(20,901)	-31.72%	83%	NA	58%
FONTENELLE ELEMENTARY SCHOOL	87,388	81,212	(6,176)	-7.07%	62%	NA	46%
FRANKLIN ELEMENTARY SCHOOL	72,164	59,991	(12,173)	-16.87%	87%	NA	54%
FULLERTON ELEMENTARY SCHOOL	87,388	76,261	(11,127)	-12.73%	92%	NA	49%
GATEWAY ELEMENTARY SCHOOL	103,060	111,236	8,176	7.93%	96%	NA	42%
GIFFORD PARK ELEMENTARY SCHOOL	73,955	69,902	(4,053)	-5.48%	81%	NA	43%
GILDER ELEMENTARY SCHOOL	79,328	51,047	(28,281)	-35.65%	71%	10%	54%
GOMEZ HERITAGE ELEMENTARY SCHOOL	105,299	86,618	(18,681)	-17.74%	99%	NA	55%
HARRISON ELEMENTARY SCHOOL	68,582	54,669	(13,913)	-20.29%	70%	NA	51%
HARTMAN ELEMENTARY SCHOOL	76,642	62,998	(13,644)	-17.80%	90%	NA	44%
INDIAN HILLS ELEMENTARY SCHOOL	89,179	94,903	5,724	6.42%	89%	NA	42%

ELEMENTARY EDUCATIONAL ADEQUACY ASSESSMENT

UTILIZATION MAPPED TO STUDENT DENSITY



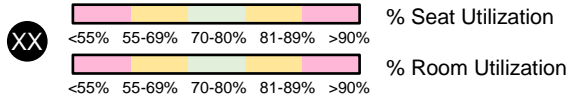
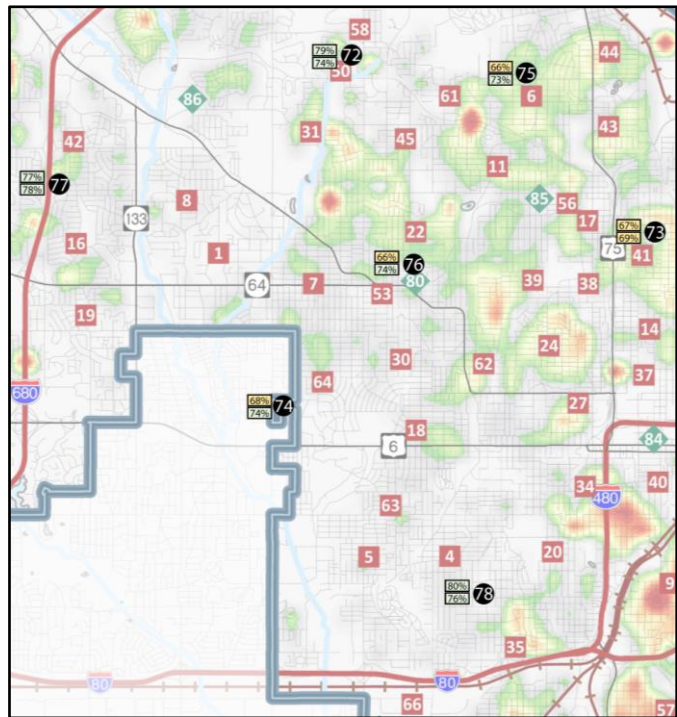
*Data based on Fall 2021 and Spring 2022

		BEVERIDGE		BUFFETT		BRYAN		DAVIS		HALE		KING SCIENCE		LEWIS & CLARK		MARRS		McMILLAN		MONROE		NORRIS	
		UTILIZATION		UTILIZATION		UTILIZATION		UTILIZATION		UTILIZATION		UTILIZATION		UTILIZATION		UTILIZATION		UTILIZATION		UTILIZATION		UTILIZATION	
		SEAT	ROOM	SEAT	ROOM	SEAT	ROOM	SEAT	ROOM	SEAT	ROOM	SEAT	ROOM	SEAT	ROOM	SEAT	ROOM	SEAT	ROOM	SEAT	ROOM	SEAT	ROOM
Number of General Purpose Classrooms		21		36		19		23		23		22		20		35		25		26		36	
I. GENERAL ACADEMIC LEARNING ENVIRONMENTS																							
A. Team Instruction		67%	71%	71%	71%	70%	74%	78%	72%	79%	74%	67%	69%	68%	74%	77%	79%	66%	73%	77%	78%	80%	76%
1. Team Learning Studios		60%	73%	68%	73%	71%	77%	81%	75%	77%	75%	71%	79%	58%	69%	71%	70%	59%	75%	73%	76%	78%	80%
a. English Language Arts (ELA) Learning Studio(s)		68%	73%	78%	74%	71%	76%	82%	75%	77%	75%	75%	76%	77%	78%	83%	80%	60%	74%	81%	81%	85%	72%
b. Social Studies		70%	63%	75%	74%	65%	69%	77%	76%	75%	71%	71%	74%	63%	74%	77%	85%	63%	71%	78%	79%	74%	77%
c. Mathematics Learning Studio(s)		63%	75%	76%	73%	75%	75%	70%	61%	92%	78%	72%	71%	77%	75%	82%	84%	84%	70%	80%	77%	87%	70%
d. Science Learning Suite(s)		99%	88%	19%	16%	-	-	-	-	-	-	64%	53%	61%	75%	-	-	-	-	-	-	-	-
2. Non OPS OFG Space(s)																							
II. SPECIALIZED ACADEMIC LEARNING ENVIRONMENT																							
A. Special Needs Education		82%	68%	-	-	-	-	-	-	-	-	-	-	-	-	7%	13%	-	-	-	-	73%	88%
1. Special Education Learning Studio (SPED)		81%	75%	-	-	-	-	-	-	-	-	-	-	-	-	7%	13%	-	-	-	-	-	-
4. Non OPS OFG Special Needs Space(s)		84%	63%	-	-	-	-	-	-	-	-	-	-	-	-	-	-	-	-	-	-	73%	88%
B. Visual & Performing Arts		98%	78%	67%	73%	69%	69%	50%	73%	53%	58%	47%	66%	78%	75%	63%	86%	69%	76%	70%	75%	77%	83%
1. Art Education Suite		80%	75%	81%	88%	69%	69%	58%	72%	63%	75%	59%	75%	91%	75%	58%	81%	62%	75%	74%	78%	91%	91%
a. Instrumental Music Education		91%	88%	16%	66%	-	-	32%	72%	39%	38%	35%	75%	45%	75%	39%	75%	55%	78%	34%	75%	80%	81%
b. Vocal Music Education		202%	75%	53%	75%	-	-	53%	75%	44%	44%	-	-	82%	75%	-	-	109%	75%	84%	72%	42%	75%
c. General Music Education		-	-	105%	73%	-	-	-	-	68%	75%	46%	47%	-	-	80%	97%	-	-	-	-	-	-
d. Stage		-	-	25%	50%	-	-	-	-	-	-	-	-	-	-	-	-	-	-	-	-	-	-
3. Non OPS OFG Visual & Performing Arts Spaces		36%	75%	-	-	-	-	-	-	-	-	-	-	-	-	-	-	-	-	-	-	-	-
C. Physical Education		73%	100%	67%	81%	58%	83%	61%	72%	76%	75%	37%	69%	63%	81%	93%	96%	28%	75%	70%	88%	72%	92%
1. Gymnasium - Competition		73%	100%	93%	100%	37%	100%	30%	75%	28%	75%	59%	88%	21%	88%	126%	100%	28%	75%	32%	75%	57%	100%
9. Weight Room		-	-	-	-	-	-	-	-	-	-	29%	44%	-	-	-	-	-	-	-	-	-	-
11. Human Growth & Development Learning Studio		-	-	42%	63%	68%	75%	92%	69%	124%	75%	23%	75%	76%	79%	87%	100%	-	-	108%	100%	79%	88%
D. Reading Education		105%	78%	37%	75%	60%	79%	25%	50%	51%	75%	76%	8%	68%	75								

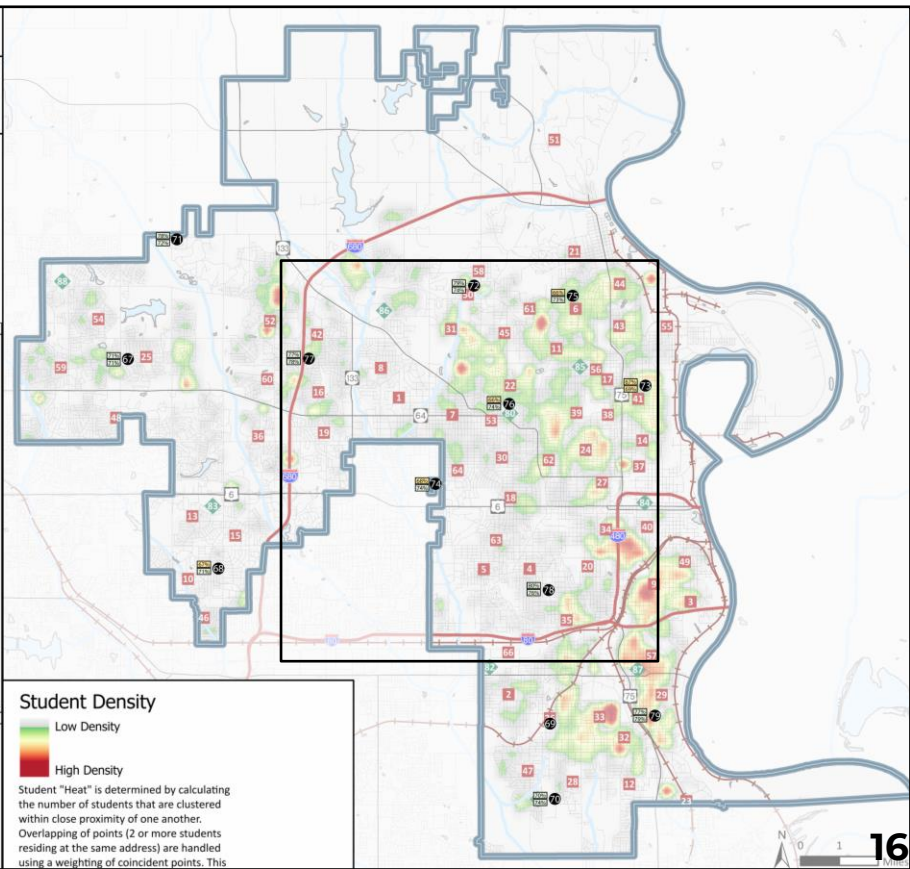
15

ELEMENTARY EDUCATIONAL ADEQUACY ASSESSMENT

UTILIZATION MAPPED TO STUDENT DENSITY



STUDENT "HEAT" DENSITY IN 2021/22 IN GRADES K-12	
Legend	
District Boundary	
Schools Points	
Elementary	
Middle School	
High School	
Map data provided by Cities of Bellevue, Boys Town, and Omaha, Douglas County and Sarpy County, State of Nebraska GIS, USGS and Census Bureau. Map created by RSP & Associates, April 2022.	
List of Schools	
Elementary Schools	High Schools
1. Adams	33. Indian Hill
2. Ashland Park/Robbins	34. Jackson
3. Bancroft	35. Jefferson
4. Beals	36. Joselyn
5. Belle Ryan	37. Kellom
6. Belvedere	38. Kennedy
7. Benson West	39. King
8. Boyd	40. Liberty
9. Castelar	41. Lathrop
10. Catlin	42. Masters
11. Central Park	43. Miller Park
12. Chandler View	44. Minor Lusa
13. Columbian	45. Mount View
14. Conestoga	46. Oak Valley
15. Crestridge	47. Pawnee
16. Dodge	48. Picotte
17. Druid Hill	49. Pine
18. Dundee	50. Pinewood
19. Edison	51. Ponca
20. Field Club	52. Prairie Wind
21. Florence	53. Rose Hill
22. Fontenelle	54. Saddlebrook
23. Forest Station	55. Sherman
24. Franklin	56. Sinner
25. Fullerton	57. Spring Lake
26. Gateway	58. Springville
27. Gifford Park	59. Standing Bear
28. Gilder	60. Sunny Slope
29. Edward Gomez Heritage	61. Walconda
30. Harrison	62. Walnut Hill
31. Hartman	63. Washington
32. Highland	64. Western Hills
33. Wilson Elementary Focus	65. Wilson Elementary Focus
Middle Schools	High Schools
66. Benson	67. Benson
68. Beveridge	68. Benson
69. Bluestem	69. Bluestem
70. Burke	70. Burke
71. Central	71. Central
72. Central	72. Central
73. Central	73. Central
74. Central	74. Central
75. Central	75. Central
76. Central	76. Central
77. Central	77. Central
78. Central	78. Central
79. Central	79. Central
80. Central	80. Central
81. Central	81. Central
82. Central	82. Central
83. Central	83. Central
84. Central	84. Central
85. Central	85. Central
86. Central	86. Central
87. Central	87. Central
88. Central	88. Central



Student Density

Low Density

High Density

Student "Heat" is determined by calculating the number of students that are clustered within close proximity of one another. Overlapping of points (2 or more students residing at the same address) are handled using a weighting of coincident points. This

MASTER VISIONS FOR HIGH SCHOOLS



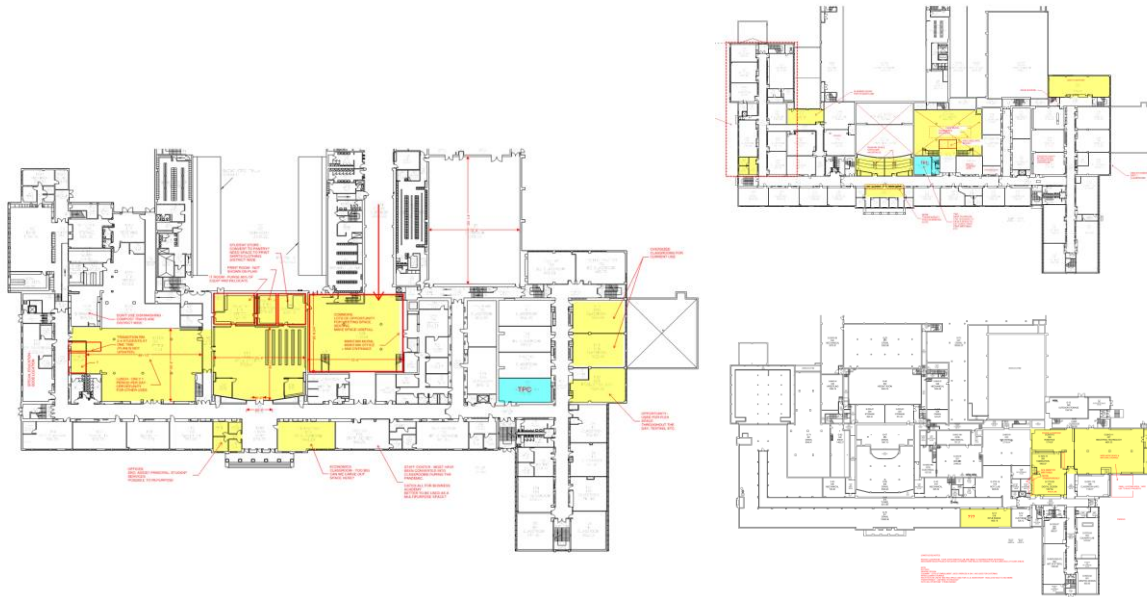
PROCESS: DESIGN GUIDELINES

- a. Spaces should be dynamic and multi-use, shared between all programs.
- b. Add/Improve space for student collaboration, i.e. flex classrooms, student commons, and media & library
- c. Add/Improve space for teacher collaboration and professional development.
- d. Provide space near the entrance for community and business partners with layered security.
- e. Improve student services.
- f. Reduce the quantity of lockers.
- g. Improve wayfinding.

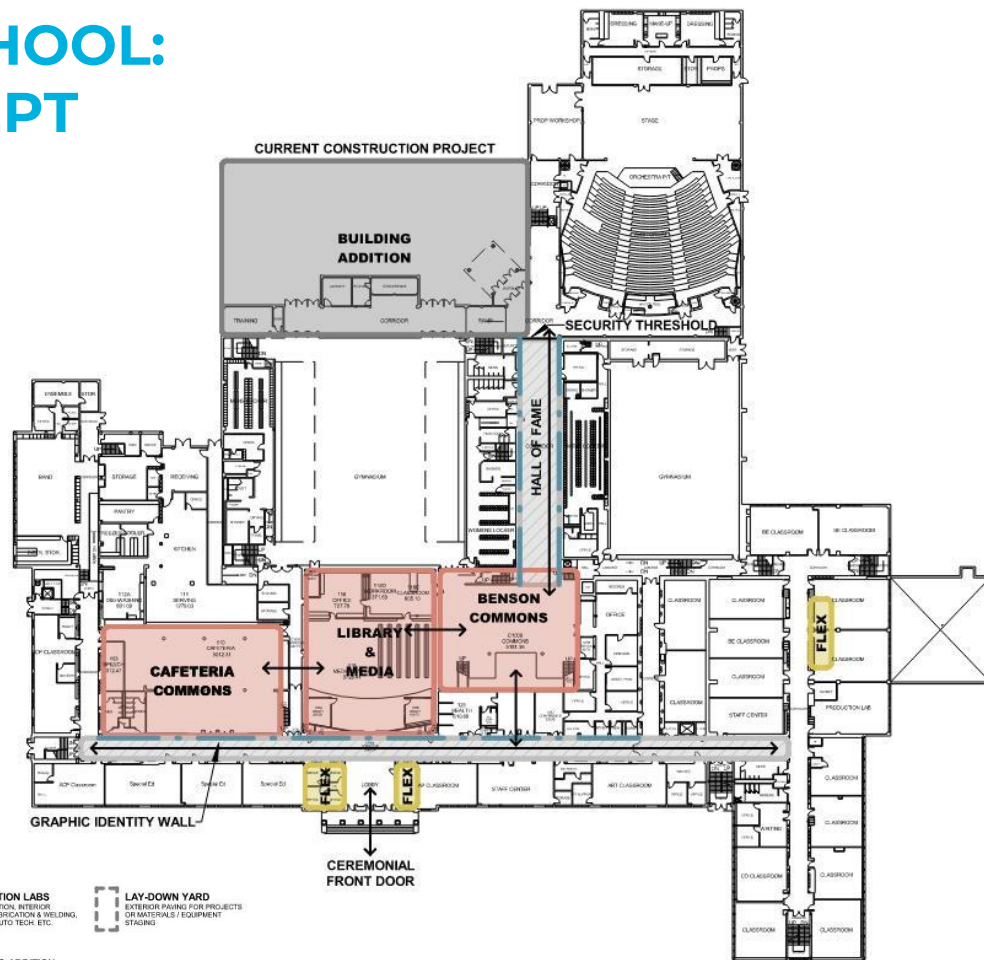


PROCESS: PROTOTYPE

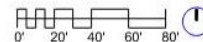
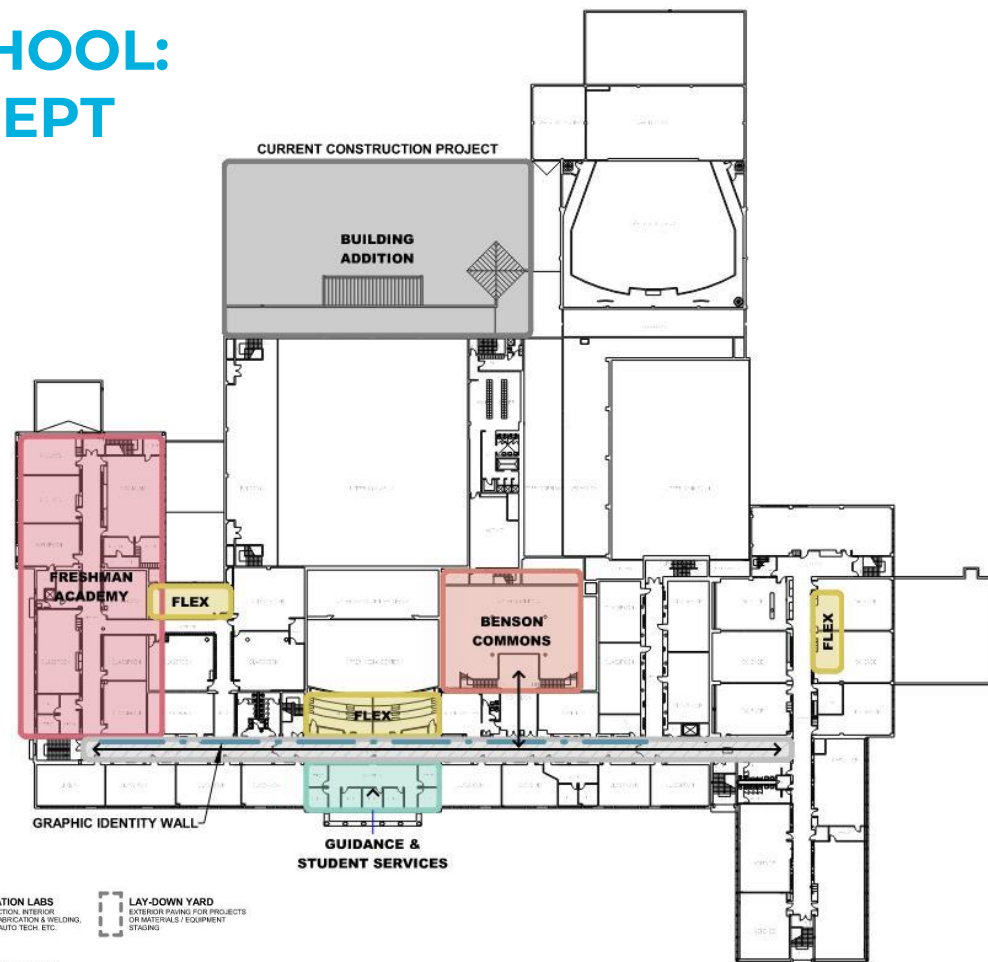
- **Benson High School** is serving as the prototype to establish visioning goals and priorities.
- Building tours at all high school looking for underutilized, outdated and/or inefficient spaces as “opportunity areas”.



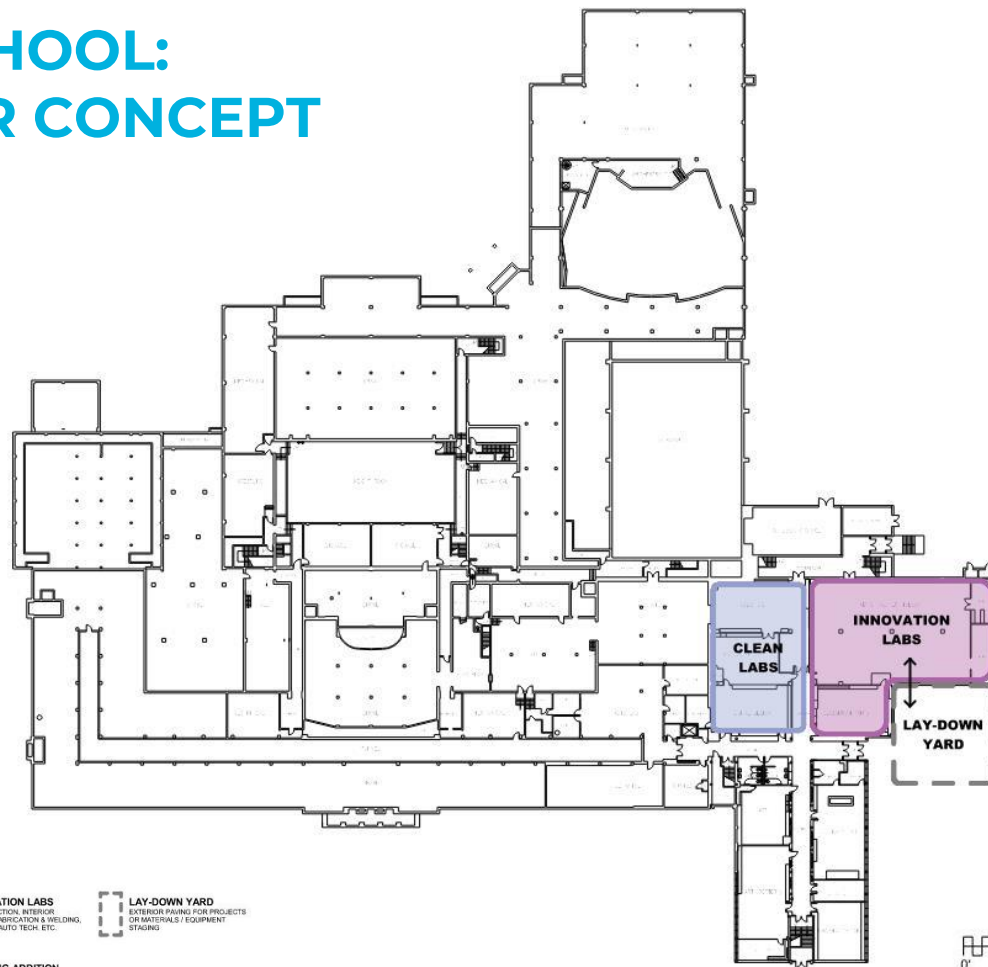
BENSON HIGH SCHOOL: 1ST FLOOR CONCEPT



BENSON HIGH SCHOOL: 2ND FLOOR CONCEPT



BENSON HIGH SCHOOL: BASEMENT FLOOR CONCEPT



BENSON: VISION OF STUDENT COMMONS



BENSON: VISION OF LIBRARY & MEDIA CENTER



BENSON: VISION OF CAFETERIA COMMONS



Next Steps:

- Finalize Facilities Condition Assessments
- Finalize High School Educational Adequacy Assessments
- Finalize Master Visions for High Schools
- Prepare Recommendations for:
 - 5 years
 - 10 years
 - 15 years
 - 20 years



Thank You.
