



## CAST, CREW, and PIT Packet and Information

**Show Dates:** June 28<sup>th</sup> and 29<sup>th</sup> at 7:00pm, & June 30<sup>th</sup> at 2:00pm

**Rehearsal Dates CAST/PIT:** May 28<sup>th</sup> – June 27<sup>th</sup> (Monday-Friday, 8:00am-Noon)

**Technical Dates CREW:** May 28<sup>th</sup> – June 29<sup>th</sup> (Monday-Friday, Noon-4:00pm)

Burke High School, 12200 Burke Blvd, Omaha, NE 68154

**OPTIONAL Pre-Audition Tap Workshop:**

Monday, April 15 • 4:00pm-5:00pm

Burke High School, 12200 Burke Blvd, Omaha, NE 68154

Monday, April 22 • 4:00pm-5:00pm

Buena Vista High School, 5616 L St, Omaha, NE 68117

## **TAP WORKSHOP REGISTRATION LINK**

**Cast Auditions: Rising 6<sup>th</sup> graders thru graduated seniors (PICK ONE DATE)**

Saturday, April 27<sup>th</sup> • 9:00am-Noon & 1:00pm-4:00pm

Burke High School, 12200 Burke Blvd, Omaha, NE 68154

Saturday, May 4<sup>th</sup> • 9:00am-Noon & 1:00pm-4:00pm

Buena Vista High School, 5616 L St, Omaha, NE 68117

- Complete Application linked below
- Please choose one of the short selections of music to sing.
- Please choose one of the readings to perform
- Be prepared to learn a short section of choreography
- OPTIONAL tap ensemble choreography

**Technical Theatre Students: Rising 9<sup>th</sup> graders thru graduated seniors**

- Prior experience is ideal but NOT required
- Complete Application linked below

## **Cast Audition/Crew Application Form Link**

**For More information on CAST or CREW Contact:**

Emily Mokrycki at [Emily.Mokrycki@ops.org](mailto:Emily.Mokrycki@ops.org)

Tony Schik at [Anthony.Schik@ops.org](mailto:Anthony.Schik@ops.org)

**\*\*\*Please fill out forms from your OPS Login\*\*\***

# HELLO PIT MEMBERS & WELCOME TO THE SWAMP!

The pit for the OPS Summer Musical “Shrek” calls for the following instruments:

- Flute/Piccolo
- Oboe
- Clarinet
- Bass Clarinet
- Sop. Sax
- Alto Sax
- Tenor Sax
- Bari. Sax
- Trumpet
- French Horn
- Trombone
- Bass Trombone
- Percussion
- Drum Set
- Keyboards
- Violin
- Cello
- Acoustic Guitar
- Electric Guitar
- Ukulele/Mandolin
- Bass Guitar
- Upright Bass

In many cases, woodwind and guitar players may be asked to double on a secondary instrument (*examples: guitar and ukulele, alto and bari sax*)

## **AUDITION PROCESS: Rising 9<sup>th</sup> graders thru graduated seniors**

1. Fill out this **\*\*PIT APPLICATION FORM\*\*** using your school email address.  
The application will close on May 4<sup>th</sup>.
2. Upload video of yourself playing the audition cuts (see below) to **Flipgrid Link**. The link will go live and be emailed late March/Early April and will close on the final audition date, May 4<sup>th</sup>.

## **AUDITION CUTS:**

There are 2 items you need to submit in your Flipgrid Link:

- 1) Video of you playing the Concert F-Blues and Concert Bb-Blues Scales on your primary instrument. (*Woodwinds: Please choose one scale to play on your secondary instrument.*)
- 2) Video of you playing one of the following selections on your primary instrument:
  - a. Lady Sings the Blues (ballad/blues)
  - b. Unchain My Heart (rock)
  - c. You Are the Sunshine of My Life (funk/soul)

You may pick whichever selection best represents your instrument’s range, your ability level, and your understanding of style. Sheet music for scales and selections can be found here and later in this packet.

Any questions or concerns?  
Email Mrs. Fisher at [river.fisher@ops.org](mailto:river.fisher@ops.org)

**\*\*\*Please fill out forms from your OPS Login\*\*\***

# *SHREK: The Musical* Character Descriptions

## **Shrek (A2-G#4)**

Our story's title character. A big, green, terrifying ogre who lives alone on a swamp. He embarks on a journey to rid his land of fairytale creatures and, along the way, falls in love with Fiona. Begins as a grumpy hermit, but reveals his layers and eventually becomes the hero.

Gender: Male

## **Fiona (F3 to G5)**

The beautiful princess of Far Far Away, she transforms into an ogre every night when the sun sets. Rescued by Shrek and eventually falls in love with him. Quirky, blunt, and multitalented, she is not an ordinary princess.

Gender: Female

## **Donkey (C3 to B4)**

A talking donkey who joins Shrek on the run from Farquaad's guards. Quite the chatterbox, he is not deterred by Shrek's looks and practically forces himself into his good graces. Easily frightened and pushy, but also an optimistic with heart.

## **Lord Farquaad (B2 to D5)**

The comically short, ruthless ruler of Duloc. He is in search of a prince to marry so that he can become king. Has an intensely unfair bias against fairytale creatures that stems from a resentment of his father. Self-absorbed, lonely, and cruel.

## **Dragon (F3 to Eb5)**

A dragon that has been charged with guarding Princess Fiona in her isolated castle. She eventually falls in love with Donkey and attempts to keep him there forever. Imposing and flirtatious, but tired of her job as the glorified baby-sitter.

## **Gingy (B3 to C#5)**

A gingerbread man initially kidnapped by Lord Farquaad. His wit and resolution help him both avoid trouble and inspire the rest of the fairytale creatures. Puppet. Can be operated by actress appearing as Sugar Plum Fairy.

## **Pinocchio (E3 to F#4)**

The leader of the fairytale creatures. He is an animated puppet whose nose grows every time he lies. Plenty of sass with a penchant for lying.

## **Ensemble**

Fairytale Creatures (Big Bad Wolf, Three Little Pigs, White Rabbit, Fairy Godmother, Peter Pan, Wicked Witch, Ugly Duckling, Three Bears, Mad Hatter, Humpty Dumpty, Elf, Dwarf, Three Blind Mice); Angry Mob; Happy People; Guards; Knights; Rats

## **Shrek Audition Monologues (choose one)**

### **DONKEY:**

Can I just say? That was incredible! Man, they were trippin' over themselves to get away from you. I liked that. Say, you lost or something? You're trying to figure out the best route to Duloc? I know Duloc! You gotta let me show you the way, because I am like a GPS with fur! C'mon, nobody's fine on their own. Not when you look like we do. Man, this place is goin' Stepford! We gotta join forces. Otherwise they're gonna lock me up. I cannot go back in a cage. I don't know if I mentioned it but I did 6 years in solitary for impersonating a piñata.

---

### **FARQAAD:**

Listen cookie, you still haven't told me where the princess is. Oh, she's in a dragon-guarded castle surrounded by hot lava. Well, that sounds dangerous. She's in the highest room in the tallest tower, you say? The Princess Fiona with fiery red hair. Ooo, Princess Fiona, she sounds perfect. Except for that dragon and lava thing. I'll have to find someone else to go rescue her. Captain, round up your men, summon the citizens and bring that cookie to the swamp. Thelonius, tell the royal coiffuer I need to get my hair pressed. We're going to get a queen.

---

### **FAIRYTALE CHARACTER #1:**

What are we doing in your swamp? Well gosh, we were forced to come here. Lord Farquaad, he hoofed and he poofed and he signed an eviction notice. Maybe you could try talking to him. He'd listen to you! You're big and scary! Um, go back? We can't go back. Farquaad will turn us into bratwurst. The guy's bad news. Look here Ogre, I'm gonna spell it out for ya. We don't want us here anymore than you do. But you're the only one tough enough to stand up to that no-good flim flammer Farquaad.

---

### **FAIRYTALE CHARACTER #2:**

Now wait a minute! Maybe that ogre wasn't the answer but something better will come along, and we have to wait for it, because that's what fairytale characters do. We wait for miracles. We wish upon stars. We just need to lay low until this all blows over. Down with Farquaad! Power to piggies and the big bad wolf, and the three bears and the sugar plum fairy.

---

### **FIONA #1:**

Oh hello! Sorry I'm late! Welcome to Fiona: the Musical! Yay, let's talk about me. Once upon a time, there was a little princess named Fiona, who lived in a Kingdom far, far away. One fateful day, her parents told her that it was time for her to be locked away in a desolate tower, guarded by a fire-breathing dragon- as so many princesses had for hundreds of years before. Isn't that the saddest thing you've ever heard? A poor little princess hidden away from the world, high in a tower, awaiting her one true love.

---

**FIONA #2:**

Donkey, it's okay! Shhh! Donkey, I am the princess. It's me – in this body. No, I didn't eat the princess. "By day one way by night another – this shall be the norm until you find true loves first kiss, and then take loves true form" No, Donkey it's not a poem it's a curse. I've had it since I was a girl. A witch cast a spell on me. So now every night, when the sun goes down I become this . . . this horrible, ugly beast. Donkey, if lord Farquaad finds out I look like this, he'll never marry me. I have to kiss my true love. The kiss is the only thing that will break the spell and make me beautiful. Tell Shrek? No! He can't know! And you can't tell him! No one must ever know! Promise you won't tell.

---

**GINGY:**

Ohhh gosh. Uh oh, what's happening now? Ohhh this is scary. Ohhh, geez. Ohhh nooo! Oh, it's you. (With disgust) Look what you've done to my legs! You're a monster! You say that the fairytale characters have poisoned your kingdom? It's not a kingdom because you're not a king! You want me to tell you where you can find a princess to marry? Bite me! Okay, well, maybe I have heard tell of a princess. From who? From the Muffin man. Do you know the muffin man? Who lives on Drury lane? Can I go now? No! Not the buttons! Not my gumdrop buttons!

---

**PINOCCHIO:**

This place is a dump! Yeah, yeah I read Lord Farquaad's decree. " All fairytale characters have been banished from the kingdom of Duloc. All fruitcakes and freaks will be sent to a resettlement facility." Did that guard just say "Pinocchio the puppet"? I'm not a puppet, I'm a real boy! Man, I tell ya, sometimes being a fairytale creature sucks pine-sap! Settle in, everyone. Might as well try to make the best of this. I don't know what choice we have. Wow, this place reeks!

---

**SHREK #1:**

Once upon a time there was a little ogre named Shrek, who lived with his parents in a bog by a tree. It was a pretty nasty place, but he was happy because ogres like nasty. On his 7th birthday the little ogre's parents sat him down to talk, just as all ogre parents had for hundreds of years before. Ahh, I know it's sad, very sad, but ogres are used to that – the hardships, the indignities. And so the little ogre went on his way and found a perfectly rancid swamp far away from civilization. And whenever a mob came along to attack him he knew exactly what to do. Rooooooooaaaaar! Hahahaha!

---

**SHREK #2:**

Stop the wedding! Fiona, I need to talk to you. You can't marry him. Because, because - - he's just marrying you so he can be king. He's not your true love. What do I know about true love? Well, uh . . . Um . . . I know I'm not the handsome prince, but if true love is blind maybe you won't mind the view. Fiona, I am your true love. We make a perfect pair. I thought that love was only true in fairy tales but then I saw your face. Now I'm a believer.

---

# Shrek Soprano/Alto Audition Cut: Morning Person

Piano-Conductor

— 2 — Morning Person

Shrek

**B**

9 FIONA:  
 Good morn-ing birds\_\_\_\_\_ good morn-ing trees!\_\_\_\_\_ Oh\_\_\_\_\_ what a love - ly day\_\_\_\_\_ The

10 11 12

Stgs., Gtr. 2

mp

C F C Am

13 14 15 16

sun's so big it hurts\_\_\_\_\_ my eyes\_\_\_\_\_ But real-ly that's o-kay\_\_\_\_\_

Kbd. 2 (Hp.)

+Stgs. (pizz.) Rds., Tpt., Glock.

mp

Bb F C Eb G7

Hn. Marktree

El. Bs.

**C**

17 18 19 20

A brand\_\_\_\_\_ new day\_\_\_\_\_ with things\_\_\_\_\_ to do. So\_\_\_\_\_ ma-ny plans\_\_\_\_\_ to make\_\_\_\_\_ I've

Gtr. 1

+Fl., Cl.

Stgs., Gtr. 2

mp

C F C Am

Shrek Tenor/Bass Audition Cut: Travel Song

Piano-Conductor

SHREK

7

# Travel Song

CUE: SHREK: "...longest day of my entire life."

Orchestrations by **DANNY TROOB**  
Associate Orchestrator **JOHN CLANCY**

(♩ = 163)

Gr. 1 (Uke.),  
Gr. 2 (Ac.)

*mf*  
A6  
+Perc.

2

E7<sup>+5</sup>

Bs. (acous)

3 DONKEY: 4 5 6

Sing a song Yes, a tra-vel song when ya got - ta go some - where 'cause the

jazz violin solo

*mf*

Ch. 3

A6

E7

7 8 9

fun is get - tin' there Yeah (Oh what the heck I must con -

Sig. x. A  
Brass

E7

A6

# Blues Scales

Concert F Blues Scale      Concert Bb Blues Scale

Flute

Concert F Blues Scale      Concert Bb Blues Scale

Clarinet in Bb

Concert F Blues Scale      Concert Bb Blues Scale

Alto Saxophone

Concert F Blues Scale      Concert Bb Blues Scale

Tenor Saxophone

Concert F Blues Scale      Concert Bb Blues Scale

Horn in F

Concert F Blues Scale      Concert Bb Blues Scale

Trumpet in Bb

Concert F Blues Scale      Concert Bb Blues Scale

Trombone/  
Baritone

Concert F Blues Scale      Concert Bb Blues Scale

Tuba

The image displays a musical score for a jazz ensemble, specifically focusing on blues scales. The title "Blues Scales" is centered at the top. The score is organized into two systems of staves. The first system includes staves for Flute, Clarinet in Bb, Alto Saxophone, and Tenor Saxophone. The second system includes staves for Horn in F, Trumpet in Bb, Trombone/Baritone, and Tuba. Each staff is divided into two main sections: "Concert F Blues Scale" and "Concert Bb Blues Scale". The music is written in 4/4 time. The Flute part shows the F blues scale (F, Gb, Ab, Bb, C, D) and the Bb blues scale (Bb, C, Db, Eb, F, G). The Clarinet in Bb part shows the F blues scale (F, Gb, Ab, Bb, C, D) and the Bb blues scale (Bb, C, Db, Eb, F, G). The Alto Saxophone part shows the F blues scale (F, Gb, Ab, Bb, C, D) and the Bb blues scale (Bb, C, Db, Eb, F, G). The Tenor Saxophone part shows the F blues scale (F, Gb, Ab, Bb, C, D) and the Bb blues scale (Bb, C, Db, Eb, F, G). The Horn in F part shows the F blues scale (F, Gb, Ab, Bb, C, D) and the Bb blues scale (Bb, C, Db, Eb, F, G). The Trumpet in Bb part shows the F blues scale (F, Gb, Ab, Bb, C, D) and the Bb blues scale (Bb, C, Db, Eb, F, G). The Trombone/Baritone part shows the F blues scale (F, Gb, Ab, Bb, C, D) and the Bb blues scale (Bb, C, Db, Eb, F, G). The Tuba part shows the F blues scale (F, Gb, Ab, Bb, C, D) and the Bb blues scale (Bb, C, Db, Eb, F, G).

# (SLOW BLUES) LADY SINGS THE BLUES

- HERBERT NICHOLS / BILLIE HOLIDAY

Handwritten musical score for "Lady Sings the Blues" in F major, 4/4 time. The score consists of 12 staves of music with various chords and a final "FINE" marking.

Chords and markings above the staves:

- Staff 1: F-, F-(#5), F-b, F-7
- Staff 2: Fmaj7, Bbmaj7, Fmaj7 Eb7 D7, 1. G-7 C7#5
- Staff 3: 2. G-7, C7, F7
- Staff 4: (F7), G7
- Staff 5: (G7), G-7 / C7 C7#5
- Staff 6: F-, F-(#5), F-b
- Staff 7: F-7, Fmaj7, Bbmaj7
- Staff 8: Fmaj7 Eb7 D7, G-7 / C7#5, F-b

Other markings include "RIT. (LAST x)" and "FINE".

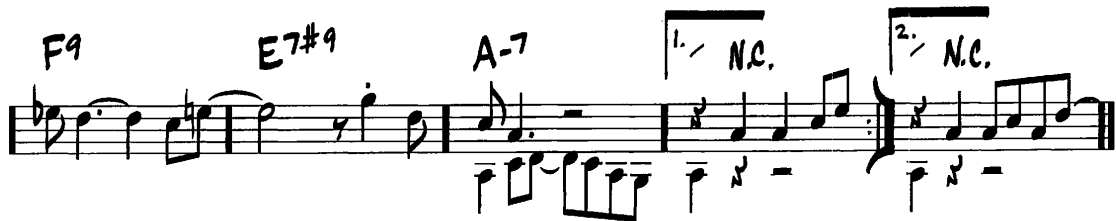
422

(ROCK)  
J=118

# UNCHAIN MY HEART

- BOBBY SHARP/  
TEDDY POWELL

INTRO



456

(ROCK)

**YOU ARE THE SUNSHINE OF MY LIFE**

-STEVIE WONDER

INTRO

Handwritten musical score for "You Are the Sunshine of My Life" by Stevie Wonder. The score is in 4/4 time and features a guitar introduction with various chords and melodic lines. The chords are written above the staff, and the melody is written on a single staff. The score includes a key signature change to one sharp (F#) and a time signature change to 3/4.

Chords and Melody:

- Intro: Cmaj7, G7#5
- Chorus: C, G/F, E-7, A7b9
- Verse: D-7, G7, C, D-7, G7
- Bridge: Cmaj7, D-7, G7, Cmaj7, D-7, G7
- Chorus: Cmaj7, D-7, G7, B-7b5, E7, E7#5
- Verse: Amaj7, B-7, E7, A-, A-(maj7), A-7
- Chorus: D7, D-7, G7
- Bridge: C, G/F, E-7, A7b9