

Music Decod

2/4 Time signature

This indicates meter.

many beats are in each

below shows what kin

there are **two** beats p


note gets the beat.

ler

The top number shows how
h measure, and the number
id of note gets the beat. Here,
er measure and the quarter

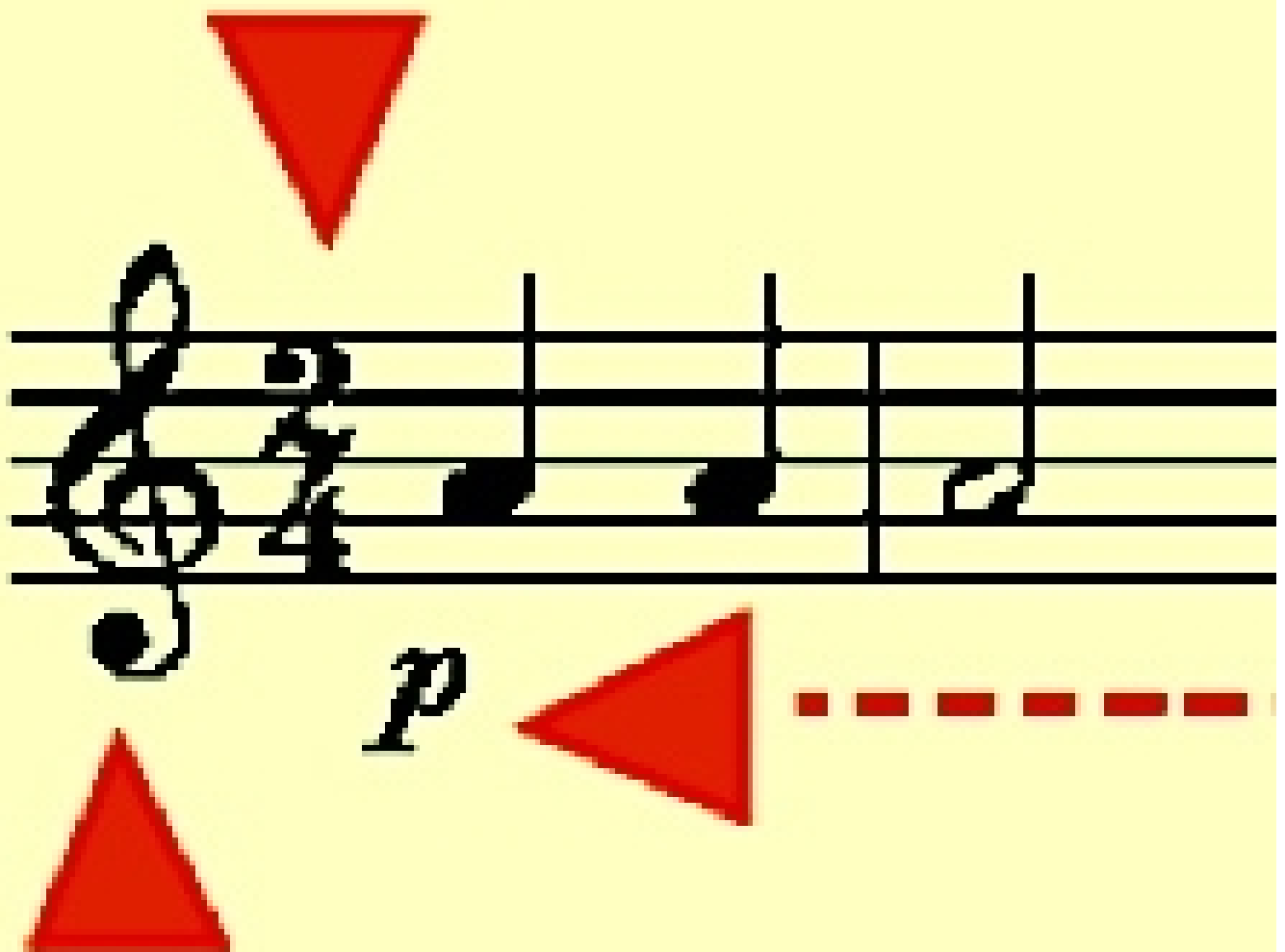
Measure

This is a grouping of beats framed by bar lines on a staff. Measures are also called **bars**.



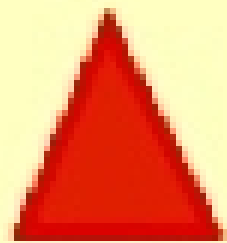
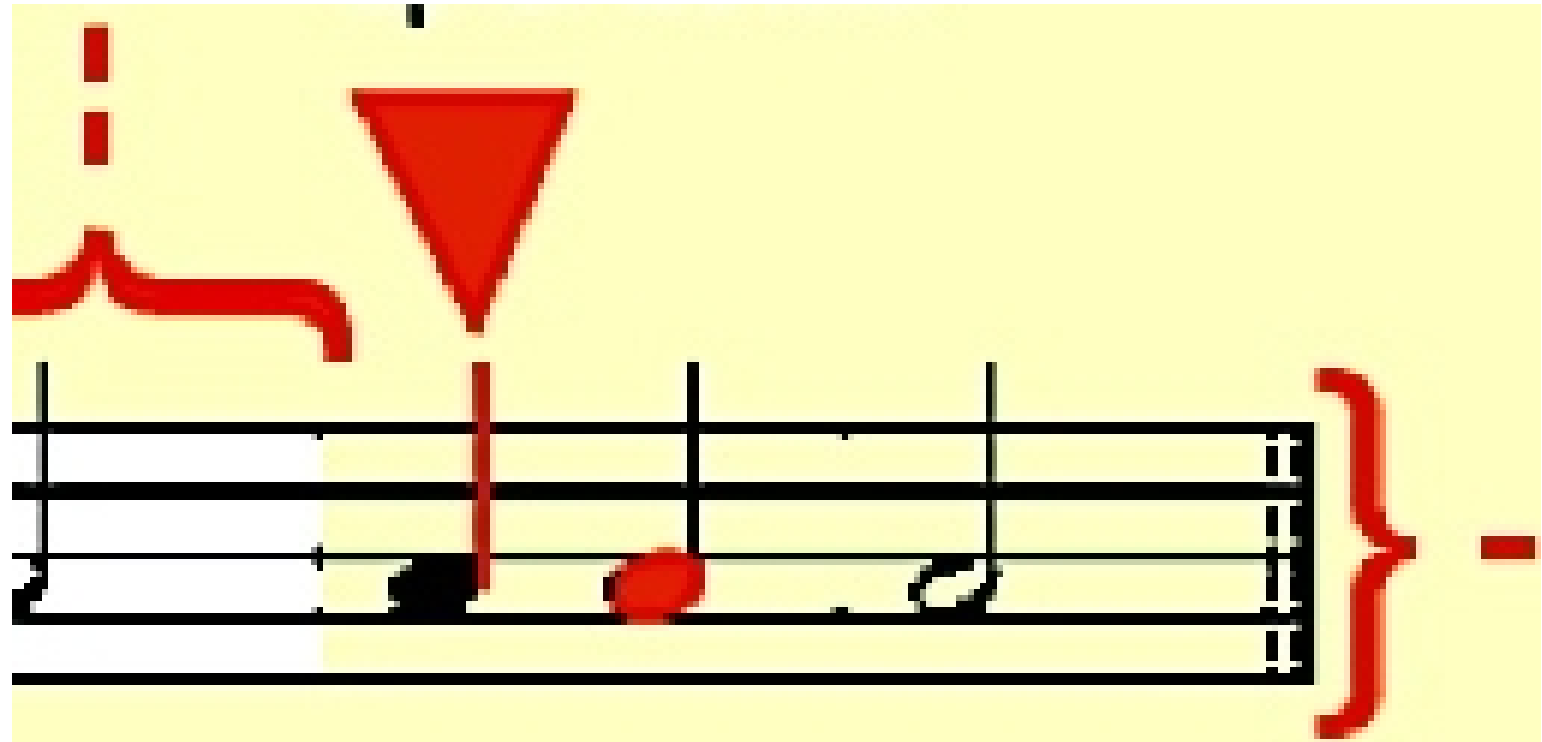
Note stems

They are found on half, quarter, and eighth notes, and can point up or down.



Clef

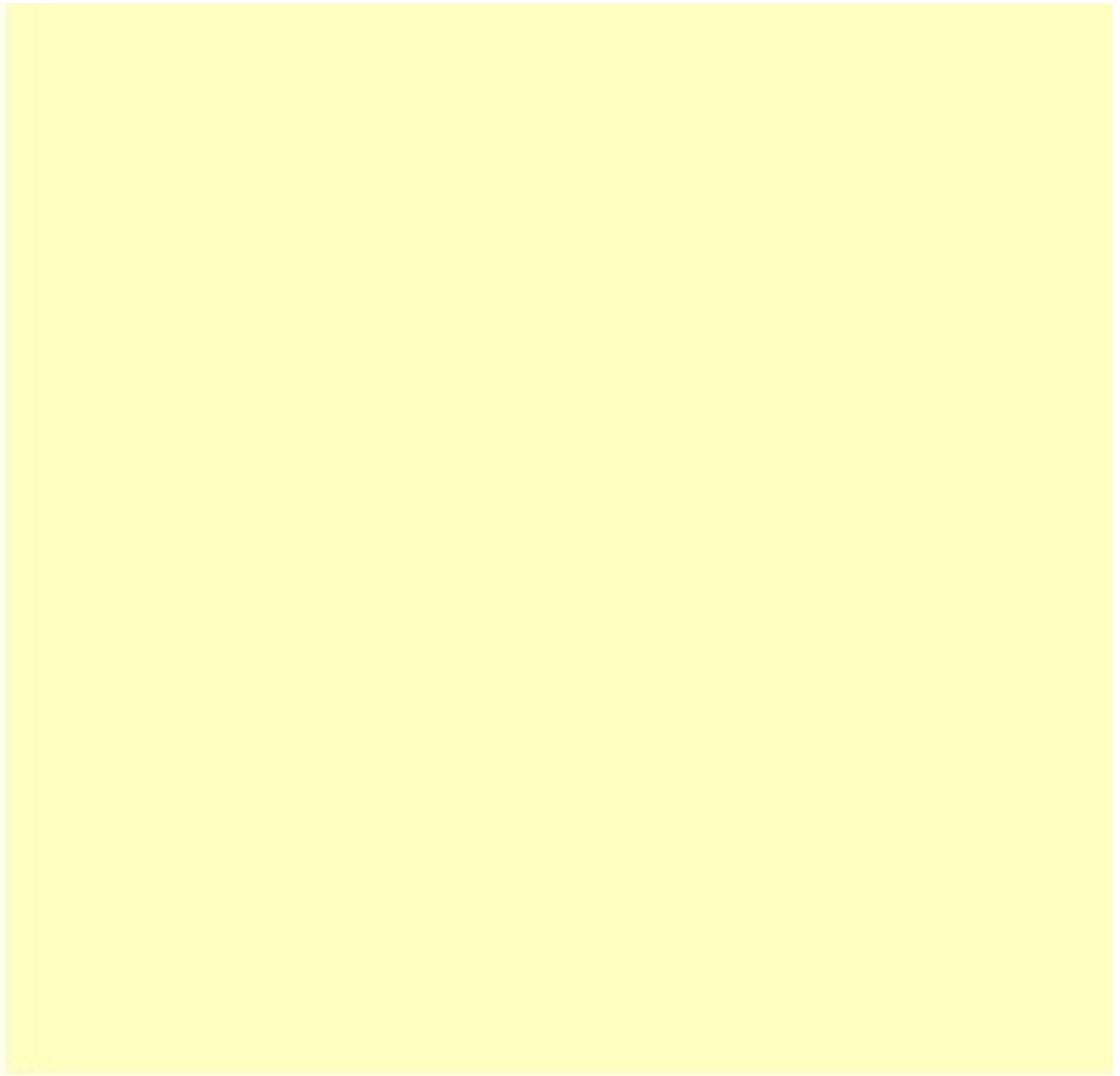
A clef is the musical symbol at the beginning of a staff. It determines the names of the notes on the staff. This is a treble clef,



Note heads

They tell you
what notes or
itches to sing
or play.







Bar lines

These vertical lines divide measures.

Rests

These rhythmic

cal
the

: symbols represent silence.

